

wilo

Pioneering for You

wilo



威乐中国官方微信



威乐中国官方微博

V201911
Wilo-Helix FIRST V/1911/CHN

Wilo-Helix FIRST V

立式多级高效高压离心泵

威乐（中国）水泵系统有限公司

地址：
北京市顺义区赵全营兆丰工业区兆丰二街 10 号
101300

电 话：010-52347888
传 真：010-52347666
网 址：www.wilo.com.cn

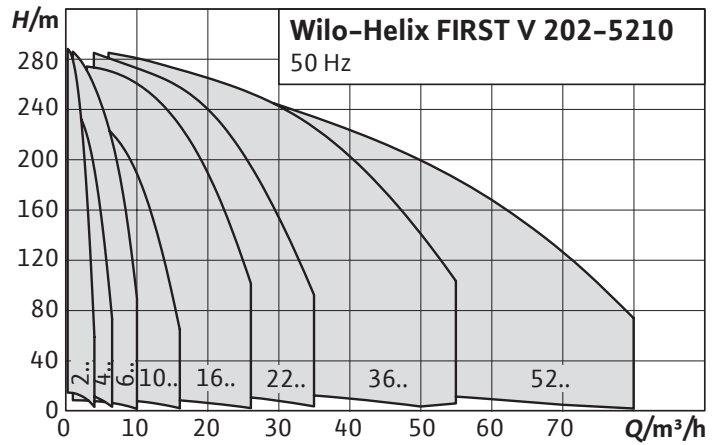
威乐（中国）销售网络

上海：021-52981538 广州：020-38817608
天津：010-52347718 青岛：010-52347718
重庆：023-67723781 成都：028-85031202
深圳：0755-23995796 郑州：010-52347718
沈阳：024-31300733 武汉：027-85355869
南京：010-52347718 西安：029-87651288
大连：0411-83700726/0725

本资料全部内容属于威乐（中国）水泵系统有限公司所有，未经本公司书面许可，任何单位及个人不得以任何形式转载。



Pioneering for You



Series modification



Wilo-Helix FIRST V

设计

非自吸，立式多级高效高压离心泵，管道式安装

型号说明

例如：Helix First V 3606/2-5/25/E/KS/././380-50

Helix First V 立式高压多级离心泵，管道式安装

36 额定流量 m³/h

06 叶轮数量

2 小叶轮数量

5 材质

5=下壳体为HT250电泳，水力部件为AISI304L

25 最大工作压力bar

16=

Helix First V2~16：16bar(配PN16 椭圆法兰)

Helix First V22~52：16bar(配PN16 圆法兰)

25=

Helix First V2~16：25bar(配PN25 圆法兰)

Helix First V22~52：25bar(配PN25 圆法兰)

30=

Helix First V2~16：30bar(配PN40圆法兰)

Helix First V22~52：30bar(配PN40 圆法兰)

产品特点

→3D叶轮，激光焊接，高效的水力效率。

→叶轮，导叶和蜗壳采用不锈钢304，优异的耐腐蚀性能。

→优秀的汽蚀性能得益于优化的流道设计。

→结构设计紧凑，占用空间小。维护方便。

→坚固的联轴节防护装置。

E 密封材质

E=EPDM

K 集装式机械密封

S 联轴节防护罩与进出水口同向

380 电压V

50 频率Hz

应用

→供水和增压

→工业循环系统

→工艺过程

→冷却水循环

→消防

→清洗系统

→灌溉

技术参数

- 电气连接：3~380V($\pm 10\%$), 50Hz
 - $\leq 3\text{kW}$ 220V / 380V; Δ/Y
 - $> 3\text{kW}$ 380V / 660V; Δ/Y
- 介质温度范围：-20~120°C
- 最大工作压力：16/25/30bar
- 防护等级：IP55
- 最大环境温度：-15~40°C
- Helix V2~16：PN16型为椭圆法兰，PN25/40型为圆法兰，符合ISO2531/7005标准
- Helix V22~52：PN16/25/40型为圆法兰，符合ISO2531/7005标准
- 机械密封配置
 - PN16 Q1E3GG
 - PN25 U3BE3GG
 - PN30：Helix First V 2~16: Q1PBE3GG
 - Helix First V 22~52: Q7BE3GG

特殊设计

- 可根据不同环境需求进行定制，如电机防护，ATEX，更高的环境温度等等

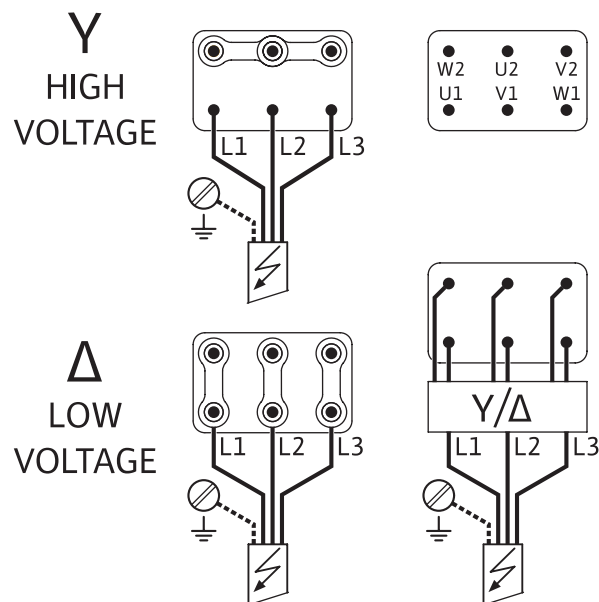
材质

- 叶轮，蜗壳和导叶为不锈钢AISI304L
- 下壳体为HT250电泳
- 轴为不锈钢AISI304L
- 机封轴套为不锈钢AISI316L
- O型圈为EPDM
- 轴套为不锈钢AISI304

供货范围

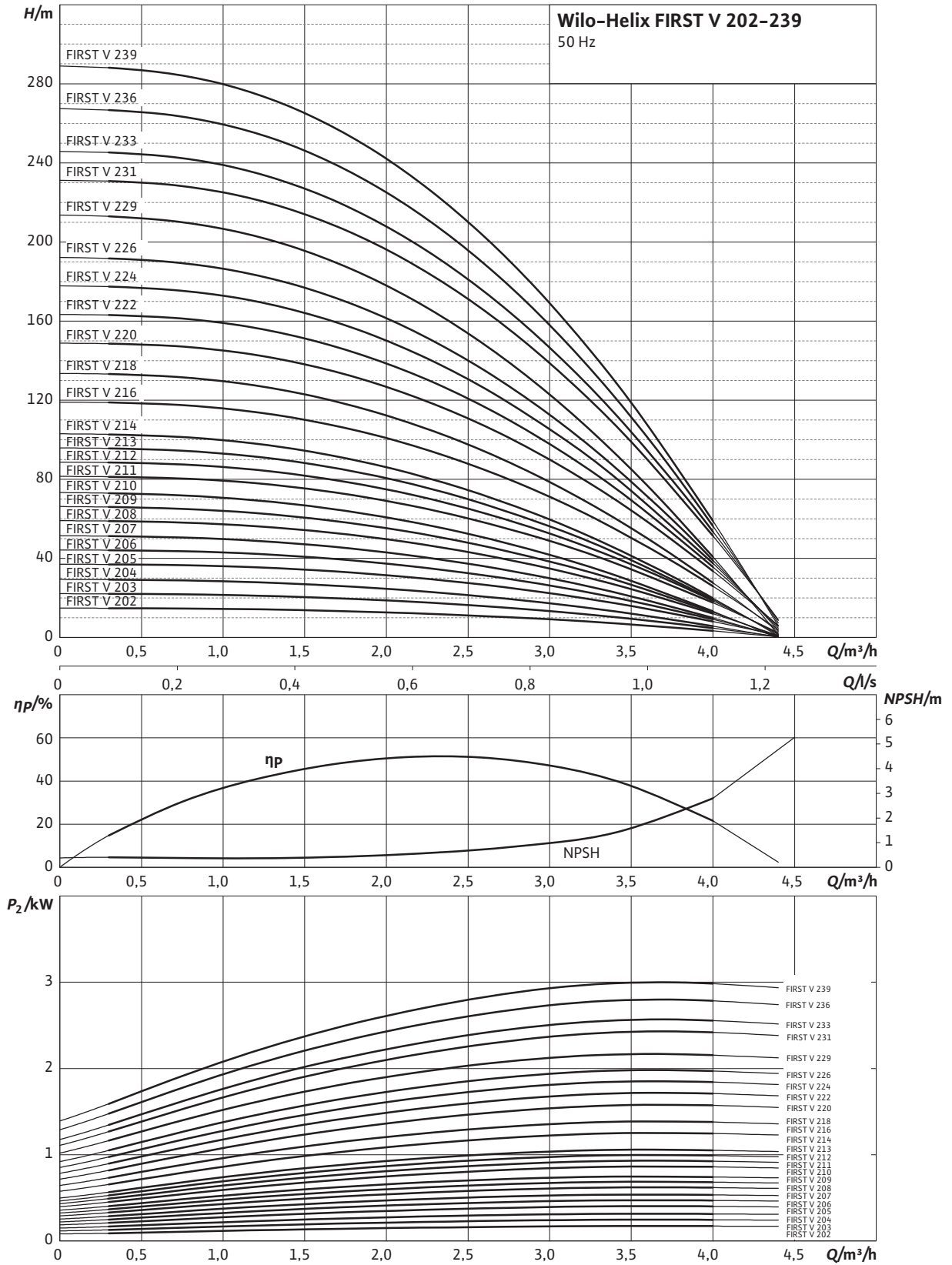
- Helix First V系列高压多级离心泵
- 安装和操作手册
- Helix V2~16(PN16为椭圆法兰)：配对铸铁法兰以及配套螺栓，螺母和垫片

接线图 Terminal diagram



性能曲线 Pump curves Minimum Efficiency Index (MEI): ≥ 0.7

Wilo-Helix FIRST V 202 - 239

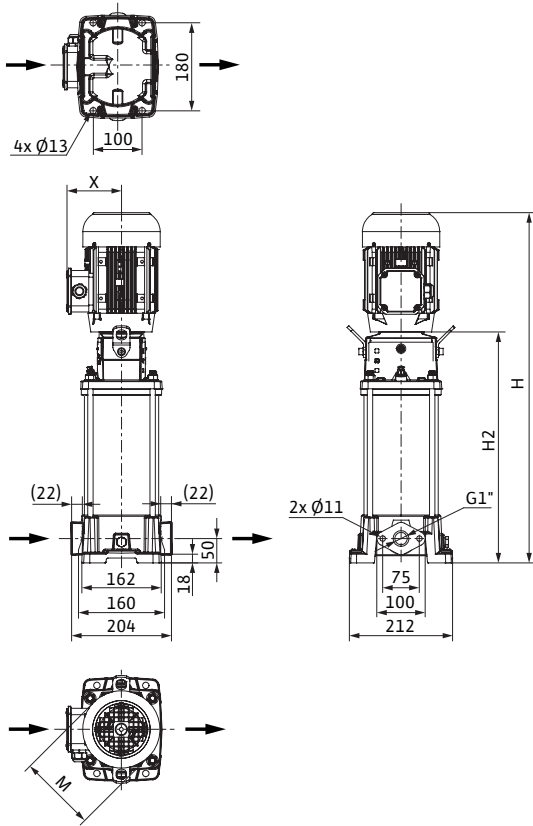


电机参数 Motor data

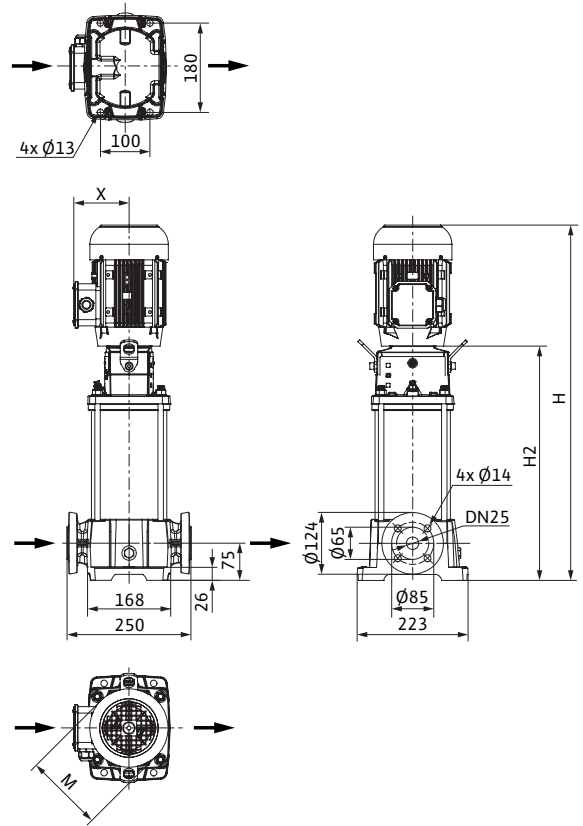
型号 Type	额定功率 Rated power	额定电流 Nominal current 3~380 V, 50 Hz	电机效率 Motor efficiency		
	P_2 kW	I_N A	$\eta_{m 50\%}$	$\eta_{m 75\%}$ %	$\eta_{m 100\%}$
Helix FIRST V 202	0.37	0.86	65.4	65.6	73.8
Helix FIRST V 203	0.37	0.86	65.4	65.6	73.8
Helix FIRST V 204	0.37	0.86	65.4	65.6	73.8
Helix FIRST V 205	0.55	1.13	72.8	76.7	77.8
Helix FIRST V 206	0.55	1.13	72.8	76.7	77.8
Helix FIRST V 207	0.55	1.13	72.8	76.7	77.8
Helix FIRST V 208	0.75	1.83	76.7	80.3	80.7
Helix FIRST V 209	0.75	1.83	76.7	80.3	80.7
Helix FIRST V 210	0.75	1.83	76.7	80.3	80.7
Helix FIRST V 211	1.10	2.54	79.1	82.1	82.7
Helix FIRST V 212	1.10	2.54	79.1	82.1	82.7
Helix FIRST V 213	1.10	2.54	79.1	82.1	82.7
Helix FIRST V 214	1.10	2.54	79.1	82.1	82.7
Helix FIRST V 216	1.50	3.36	80.5	83.7	84.2
Helix FIRST V 218	1.50	3.36	80.5	83.7	84.2
Helix FIRST V 220	2.20	4.69	83.1	85.6	85.9
Helix FIRST V 222	2.20	4.69	83.1	85.6	85.9
Helix FIRST V 224	2.20	4.69	83.1	85.6	85.9
Helix FIRST V 226	2.20	4.69	83.1	85.6	85.9
Helix FIRST V 229	2.20	4.69	83.1	85.6	85.9
Helix FIRST V 231	3.00	6.47	85.6	87.0	87.1
Helix FIRST V 233	3.00	6.47	85.6	87.0	87.1
Helix FIRST V 236	3.00	6.47	85.6	87.0	87.1
Helix FIRST V 239	3.00	6.47	85.6	87.0	87.1

Motor efficiency based on 380 V, 50 Hz

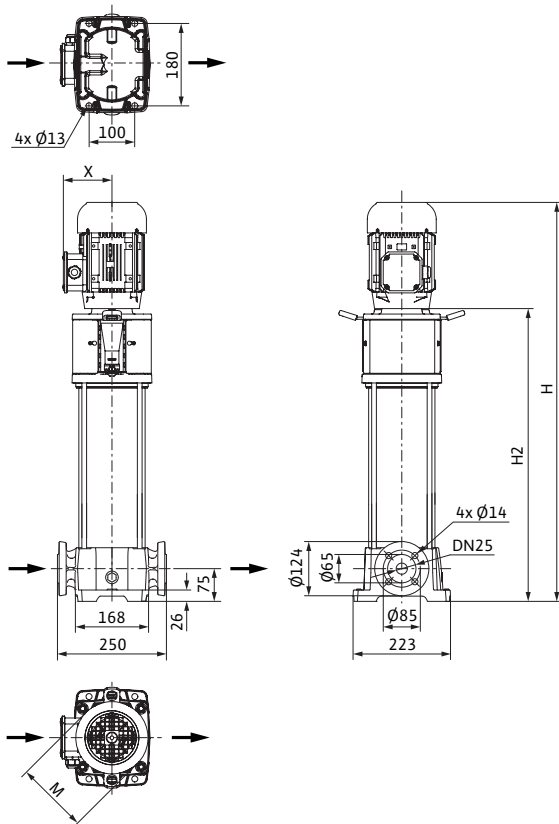
尺寸图 Dimension drawing Helix FIRST V 2-4, PN 16



尺寸图 Dimension drawing Helix FIRST V 2-4, PN 25



尺寸图 Dimension drawing Helix FIRST V 2-4, 30 bar

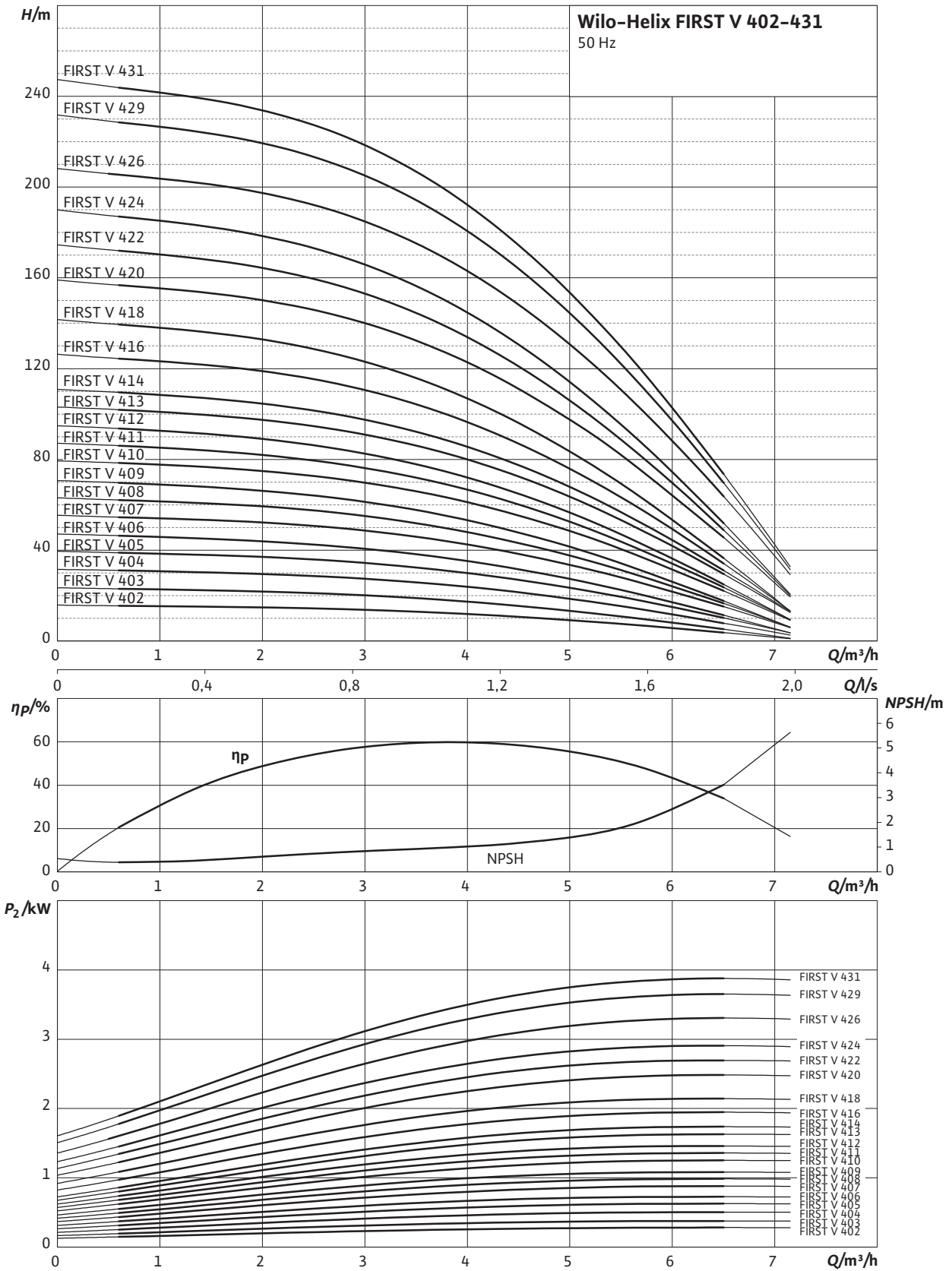


尺寸、重量 Dimensions, weights

型号 Type	承压等级 Maximum operating pressure	法兰尺寸 Nominal diameter, flange	公称直径 Nominal flange diam eter	尺寸 Dimensions				重量 Weight ap prox.
				p_{max} bar	DN	H	H2 mm	
Helix FIRST V 202	16	G 1	-	500	289	130	121	18.2
Helix FIRST V 202	25	-	25	523	312	138	119	24.1
Helix FIRST V 203	16	G 1	-	525	314	138	119	18.7
Helix FIRST V 203	25	-	25	548	337	138	119	24.5
Helix FIRST V 204	16	G 1	-	550	339	138	119	19.2
Helix FIRST V 204	25	-	25	573	362	138	119	25.0
Helix FIRST V 205	16	G 1	-	575	364	138	119	20.7
Helix FIRST V 205	25	-	25	598	387	138	119	26.5
Helix FIRST V 206	16	G 1	-	600	389	138	119	21.2
Helix FIRST V 206	25	-	25	623	412	138	119	27.0
Helix FIRST V 207	16	G 1	-	625	414	138	119	21.7
Helix FIRST V 207	25	-	25	648	437	138	119	27.5
Helix FIRST V 208	16	G 1	-	663	449	158	115	27.9
Helix FIRST V 208	25	-	25	686	472	158	115	33.8
Helix FIRST V 209	16	G 1	-	688	474	158	115	28.4
Helix FIRST V 209	25	-	25	711	497	158	115	34.2
Helix FIRST V 210	16	G 1	-	713	499	158	115	28.9
Helix FIRST V 210	25	-	25	736	522	158	115	34.7
Helix FIRST V 211	16	G 1	-	765	524	158	115	30.2
Helix FIRST V 211	25	-	25	788	547	158	115	36.0
Helix FIRST V 212	16	G 1	-	790	549	158	115	30.6
Helix FIRST V 212	25	-	25	813	572	158	115	36.5
Helix FIRST V 213	16	G 1	-	840	599	158	115	31.5
Helix FIRST V 213	25	-	25	863	622	158	115	37.4
Helix FIRST V 214	16	G 1	-	840	599	158	115	31.6
Helix FIRST V 214	25	-	25	863	622	158	115	37.5
Helix FIRST V 216	16	G 1	-	914	659	193	132	38.1
Helix FIRST V 216	16	-	25	937	682	193	132	44.0
Helix FIRST V 218	25	-	25	1037	782	193	132	48.2
Helix FIRST V 220	25	-	25	1096	832	193	132	50.0
Helix FIRST V 222	25	-	25	1196	932	193	132	52.0
Helix FIRST V 224	25	-	25	1196	932	193	132	52.0
Helix FIRST V 226	25	-	25	1271	1007	193	132	53.0
Helix FIRST V 229	30	-	25	1347	1083	193	132	55.0
Helix FIRST V 231	30	-	25	1410	1118	217	141	63.0
Helix FIRST V 233	30	-	25	1460	1168	217	141	64.0
Helix FIRST V 236	30	-	25	1535	1243	217	141	65.0
Helix FIRST V 239	30	-	25	1610	1318	217	141	67.0

性能曲线 Pump curves Minimum Efficiency Index (MEI): ≥ 0.7

Wilco-Helix FIRST V 402 - 431

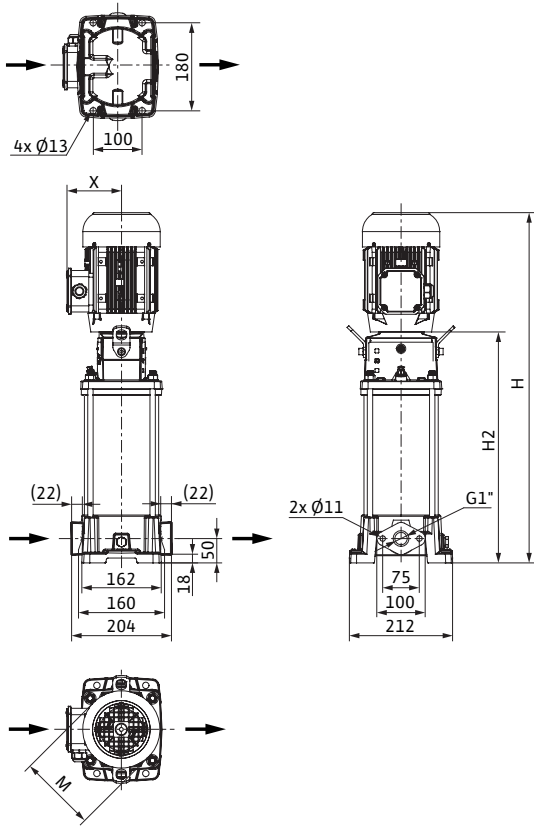


电机参数 Motor data

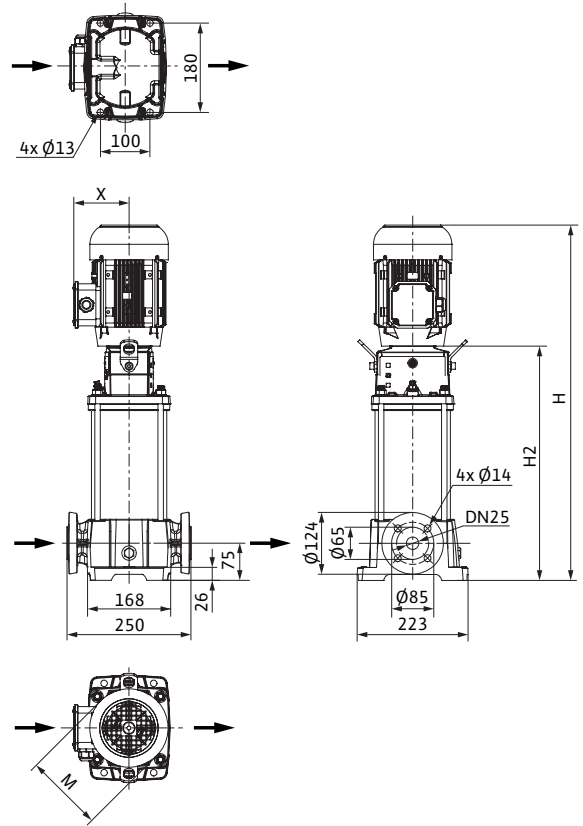
型号 Type	额定功率 Rated power	额定电流 Nominal current 3~380 V, 50 Hz	电机效率 Motor efficiency		
	P_2 kW	I_N A	$\eta_{m 50\%}$	$\eta_{m 75\%}$ %	$\eta_{m 100\%}$
Helix FIRST V 402	0.37	0.86	65.4	65.6	73.8
Helix FIRST V 403	0.37	0.86	65.4	65.6	73.8
Helix FIRST V 404	0.55	1.13	72.8	76.7	77.8
Helix FIRST V 405	0.75	1.83	76.7	80.3	80.7
Helix FIRST V 406	0.75	1.83	76.7	80.3	80.7
Helix FIRST V 407	1.10	2.54	79.1	82.1	82.7
Helix FIRST V 408	1.10	2.54	79.1	82.1	82.7
Helix FIRST V 409	1.10	2.54	79.1	82.1	82.7
Helix FIRST V 410	1.50	3.36	80.5	83.7	84.2
Helix FIRST V 411	1.50	3.36	80.5	83.7	84.2
Helix FIRST V 412	1.50	3.36	80.5	83.7	84.2
Helix FIRST V 413	2.20	4.69	83.1	85.6	85.9
Helix FIRST V 414	2.20	4.69	83.1	85.6	85.9
Helix FIRST V 416	2.20	4.69	83.1	85.6	85.9
Helix FIRST V 418	2.20	4.69	83.1	85.6	85.9
Helix FIRST V 420	3.00	6.47	85.6	87.0	87.1
Helix FIRST V 422	3.00	6.47	85.6	87.0	87.1
Helix FIRST V 424	3.00	6.47	85.6	87.0	87.1
Helix FIRST V 426	4.00	8.42	86.5	88.0	88.1
Helix FIRST V 429	4.00	8.42	86.5	88.0	88.1
Helix FIRST V 431	4.00	8.42	86.5	88.0	88.1

Motor efficiency based on 380 V, 50 Hz

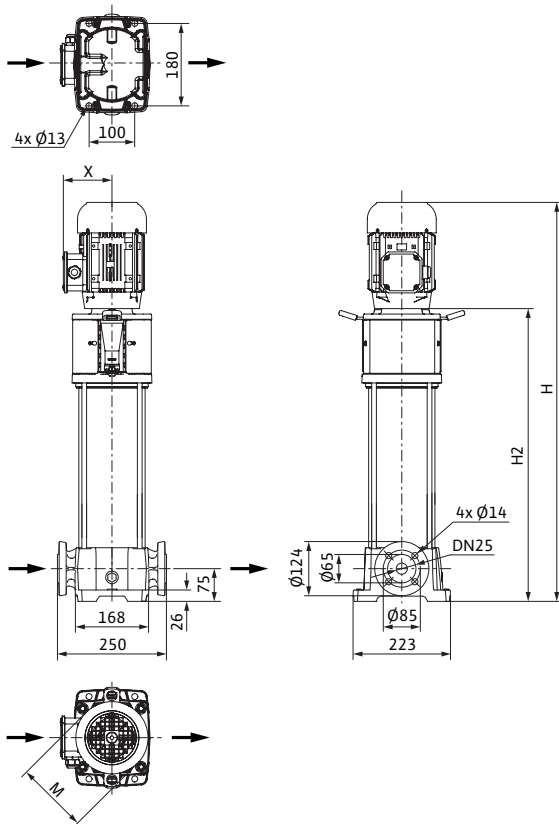
尺寸图 Dimension drawing Helix FIRST V 2-4, PN 16



尺寸图 Dimension drawing Helix FIRST V 2-4, PN 25



尺寸图 Dimension drawing Helix FIRST V 2-4, 30 bar

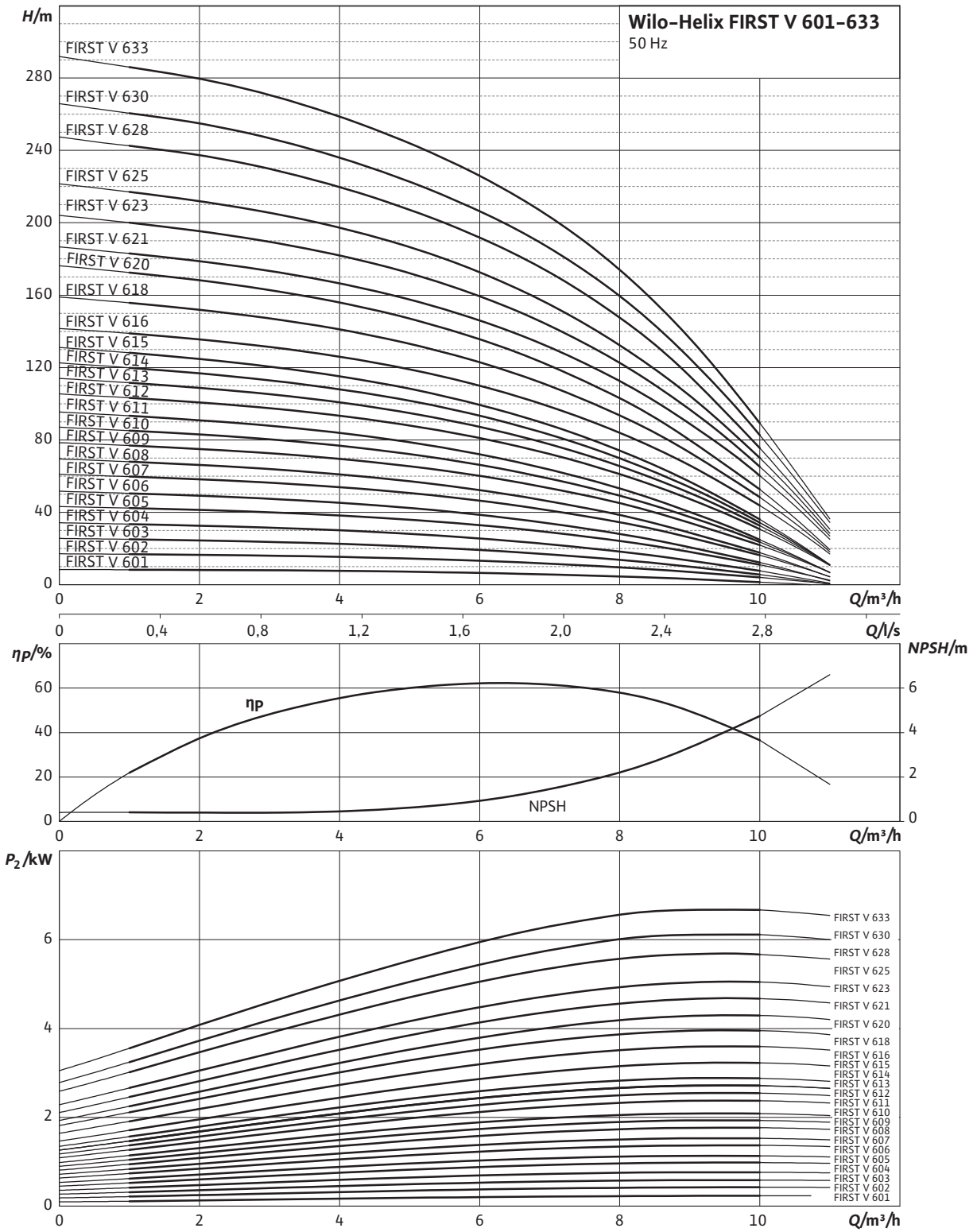


尺寸、重量 Dimensions, weights

型号 Type	承压等级 Maximum operating pressure	法兰尺寸 Nominal diameter, flange	公称直径 Nominal flange diam- eter	尺寸 Dimensions				重量 Weight ap- prox.
				p_{max} bar	DN	H	H2	
Helix FIRST V 402	16	G 1	-	500	289	138	119	19.3
Helix FIRST V 402	25	-	25	523	312	138	119	24.0
Helix FIRST V 403	16	G 1	-	525	314	138	119	20.3
Helix FIRST V 403	25	-	25	548	337	138	119	24.2
Helix FIRST V 404	16	G 1	-	550	339	138	119	22.4
Helix FIRST V 404	25	-	25	573	362	138	119	26.0
Helix FIRST V 405	16	G 1	-	588	374	158	115	29.2
Helix FIRST V 405	25	-	25	611	397	158	115	32.3
Helix FIRST V 406	16	G 1	-	613	399	158	115	30.2
Helix FIRST V 406	25	-	25	636	422	158	115	32.8
Helix FIRST V 407	16	G 1	-	665	424	158	115	32.1
Helix FIRST V 407	25	-	25	688	447	158	115	34.1
Helix FIRST V 408	16	G 1	-	690	449	158	115	33.1
Helix FIRST V 408	25	-	25	713	472	158	115	34.6
Helix FIRST V 409	16	G 1	-	715	474	158	115	34.1
Helix FIRST V 409	25	-	25	738	497	158	115	35.0
Helix FIRST V 410	16	G 1	-	764	509	193	132	40.6
Helix FIRST V 410	25	-	25	787	532	193	132	41.0
Helix FIRST V 411	16	G 1	-	789	534	193	132	41.7
Helix FIRST V 411	25	-	25	812	557	193	132	41.5
Helix FIRST V 412	16	G 1	-	814	559	193	132	42.7
Helix FIRST V 412	25	-	25	837	582	193	132	42.0
Helix FIRST V 413	16	G 1	-	873	609	193	132	45.2
Helix FIRST V 413	25	-	25	896	632	193	132	43.9
Helix FIRST V 414	16	G 1	-	873	609	193	132	45.8
Helix FIRST V 414	25	-	25	896	632	193	132	44.0
Helix FIRST V 416	16	G 1	-	923	659	193	132	47.9
Helix FIRST V 416	25	-	25	946	682	193	132	45.0
Helix FIRST V 418	25	-	25	1046	782	193	132	49.3
Helix FIRST V 420	25	-	25	1134	842	217	141	57.0
Helix FIRST V 422	25	-	25	1234	942	217	141	59.0
Helix FIRST V 424	25	-	25	1234	942	217	141	59.0
Helix FIRST V 426	25	-	25	1332	1017	196	145	62.0
Helix FIRST V 429	30	-	25	1408	1093	196	145	63.0
Helix FIRST V 431	30	-	25	1433	1118	196	145	64.0

性能曲线 Pump curves Minimum Efficiency Index (MEI): ≥ 0.7

Wilco-Helix FIRST V 601 - 633

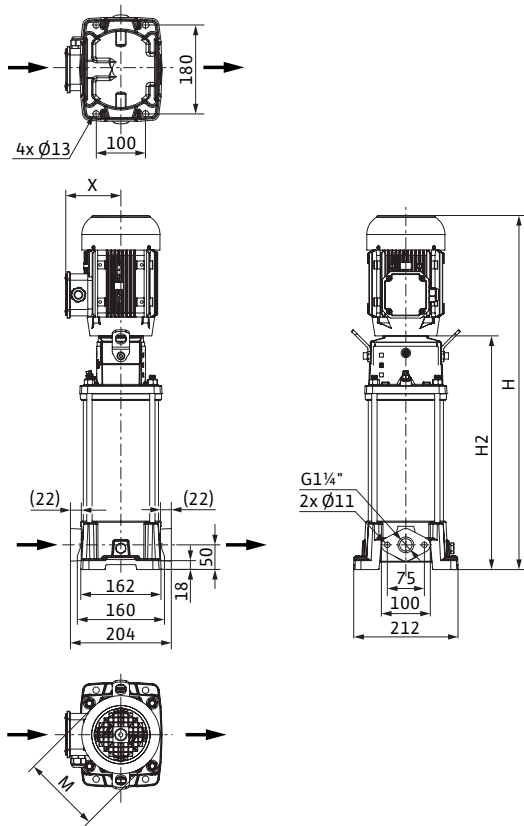


电机参数 Motor data

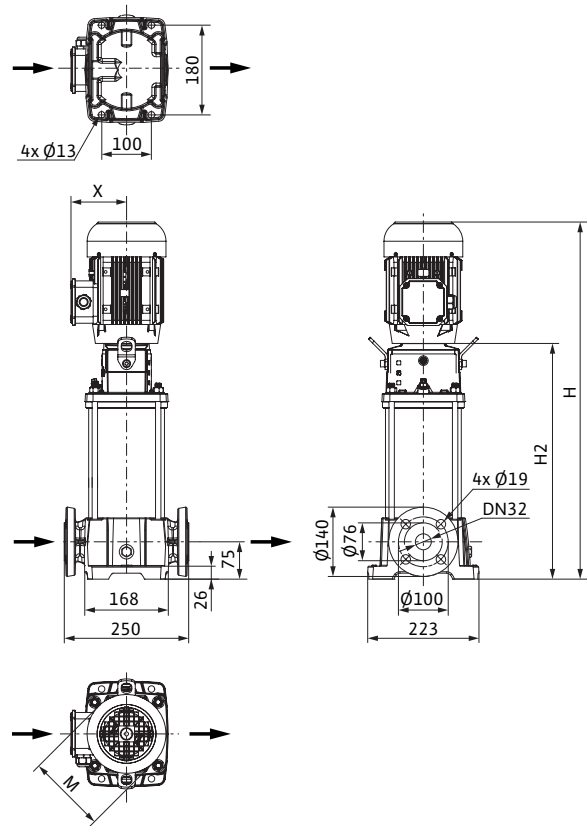
型号 Type	额定功率 Rated power	额定电流 Nominal current 3~380 V, 50 Hz	电机效率 Motor efficiency		
			$\eta_{m 50\%}$	$\eta_{m 75\%}$ %	$\eta_{m 100\%}$
	P_2 kW	I_N A			
Helix FIRST V 601	0.37	0.86	65.4	65.6	73.8
Helix FIRST V 602	0.55	1.13	72.8	76.7	77.8
Helix FIRST V 603	0.55	1.13	72.8	76.7	77.8
Helix FIRST V 604	0.75	1.83	76.7	80.3	80.7
Helix FIRST V 605	1.10	2.54	79.1	82.1	82.7
Helix FIRST V 606	1.10	2.54	79.1	82.1	82.7
Helix FIRST V 607	1.50	3.36	80.5	83.7	84.2
Helix FIRST V 608	1.50	3.36	80.5	83.7	84.2
Helix FIRST V 609	2.20	4.69	83.1	85.6	85.9
Helix FIRST V 610	2.20	4.69	83.1	85.6	85.9
Helix FIRST V 611	2.20	4.69	83.1	85.6	85.9
Helix FIRST V 612	3.00	6.47	85.6	87.0	87.1
Helix FIRST V 613	3.00	6.47	85.6	87.0	87.1
Helix FIRST V 614	3.00	6.47	85.6	87.0	87.1
Helix FIRST V 615	3.00	6.47	85.6	87.0	87.1
Helix FIRST V 616	4.00	8.42	86.5	88.0	88.1
Helix FIRST V 618	4.00	8.42	86.5	88.0	88.1
Helix FIRST V 620	4.00	8.42	86.5	88.0	88.1
Helix FIRST V 621	5.50	10.7	87.3	89.1	89.2
Helix FIRST V 623	5.50	10.7	87.3	89.1	89.2
Helix FIRST V 625	5.50	10.7	87.3	89.1	89.2
Helix FIRST V 628	5.50	10.7	87.3	89.1	89.2
Helix FIRST V 630	7.50	15.24	89.8	90.5	90.1
Helix FIRST V 633	7.50	15.24	89.8	90.5	90.1

Motor efficiency based on 380 V, 50 Hz

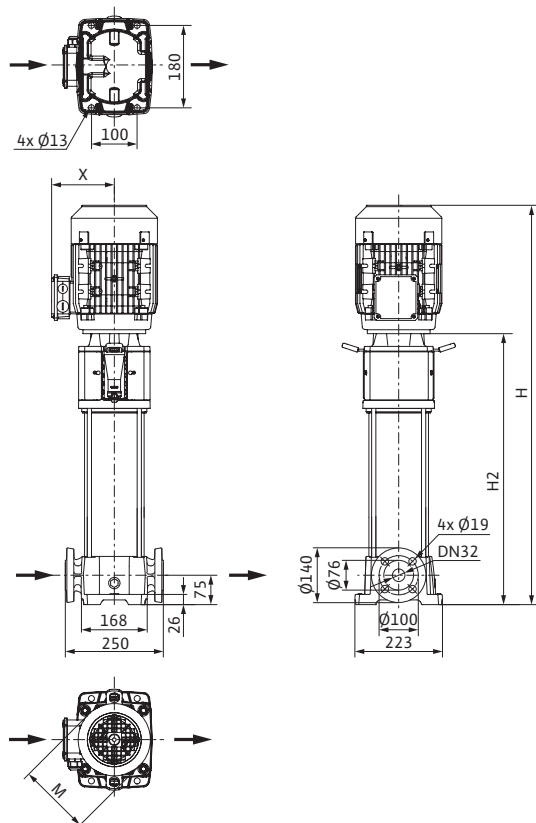
尺寸图 Dimension drawing Helix FIRST V 6, PN 16



尺寸图 Dimension drawing Helix FIRST V 6, PN 25



尺寸图 Dimension drawing Helix FIRST V 6, 30 bar

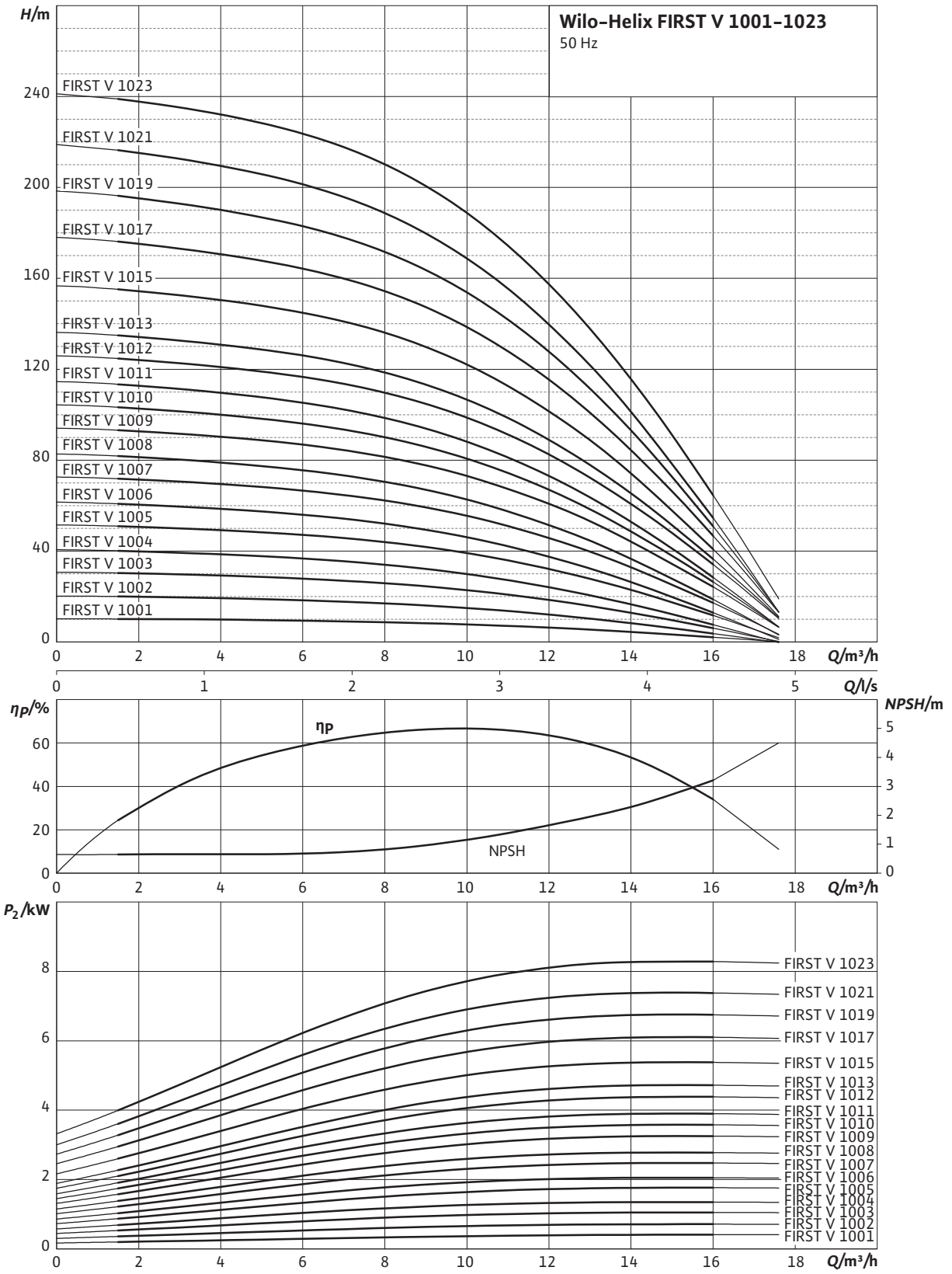


尺寸、重量 Dimensions, weights

型号 Type	承压等级 Maximum operating pressure	法兰尺寸 Nominal diameter, flange	公称直径 Nominal flange diam- eter	尺寸 Dimensions				重量 Weight ap- prox.
				p_{max} bar	DN	H	H2	
Helix FIRST V 601	16	G 1¼	-	525	314	138	119	18.8
Helix FIRST V 601	25	-	32	548	337	138	119	26.1
Helix FIRST V 602	16	G 1¼	-	525	314	138	119	20.0
Helix FIRST V 602	25	-	32	548	337	138	119	27.3
Helix FIRST V 603	16	G 1¼	-	563	352	138	119	20.7
Helix FIRST V 603	25	-	32	586	375	138	119	28.0
Helix FIRST V 604	16	G 1¼	-	613	399	158	115	27.2
Helix FIRST V 604	25	-	32	636	422	158	115	34.5
Helix FIRST V 605	16	G 1¼	-	678	437	158	115	28.8
Helix FIRST V 605	25	-	32	701	460	158	115	36.1
Helix FIRST V 606	16	G 1¼	-	715	474	158	115	29.6
Helix FIRST V 606	25	-	32	738	497	158	115	36.8
Helix FIRST V 607	16	G 1¼	-	777	522	193	132	35.8
Helix FIRST V 607	25	-	32	800	545	193	132	43.1
Helix FIRST V 608	16	G 1¼	-	814	559	193	132	36.6
Helix FIRST V 608	25	-	32	837	582	193	132	43.8
Helix FIRST V 609	16	G 1¼	-	861	597	193	132	38.4
Helix FIRST V 609	25	-	32	884	620	193	132	45.6
Helix FIRST V 610	16	G 1¼	-	898	634	193	132	39.2
Helix FIRST V 610	25	-	32	921	657	193	132	46.4
Helix FIRST V 611	16	G 1¼	-	973	709	193	132	40.5
Helix FIRST V 611	25	-	32	996	732	193	132	47.8
Helix FIRST V 612	16	G 1¼	-	1011	719	217	141	47.8
Helix FIRST V 612	25	-	32	1034	742	217	141	55.0
Helix FIRST V 613	16	G 1¼	-	1086	794	217	141	49.2
Helix FIRST V 613	25	-	32	1109	817	217	141	56.0
Helix FIRST V 614	16	G 1¼	-	1086	794	217	141	49.3
Helix FIRST V 614	25	-	32	1109	817	217	141	57.0
Helix FIRST V 615	25	-	32	1236	944	217	141	61.0
Helix FIRST V 616	25	-	32	1259	944	196	145	62.0
Helix FIRST V 618	25	-	32	1334	1019	196	145	63.0
Helix FIRST V 620	25	-	32	1409	1094	196	145	65.0
Helix FIRST V 621	25	-	32	1536	1169	232	149	72.0
Helix FIRST V 623	25	-	32	1611	1244	232	149	73.0
Helix FIRST V 625	30	-	32	1685	1318	232	149	75.0
Helix FIRST V 628	30	-	32	1760	1393	232	149	76.0
Helix FIRST V 630	30	-	32	1968	1588	225	160	95.0
Helix FIRST V 633	30	-	32	2080	1700	225	160	97.0

性能曲线 Pump curves Minimum Efficiency Index (MEI): ≥ 0.7

Wilo-Helix FIRST V 1001 - 1023

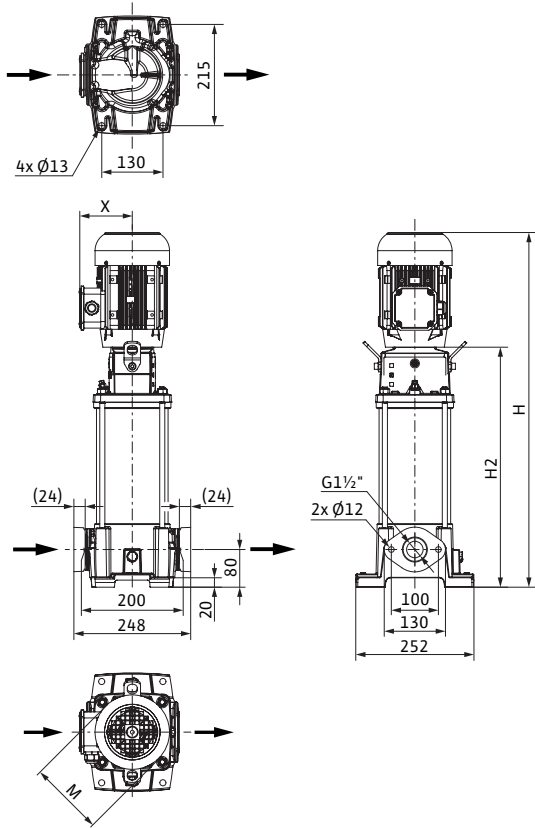


电机参数

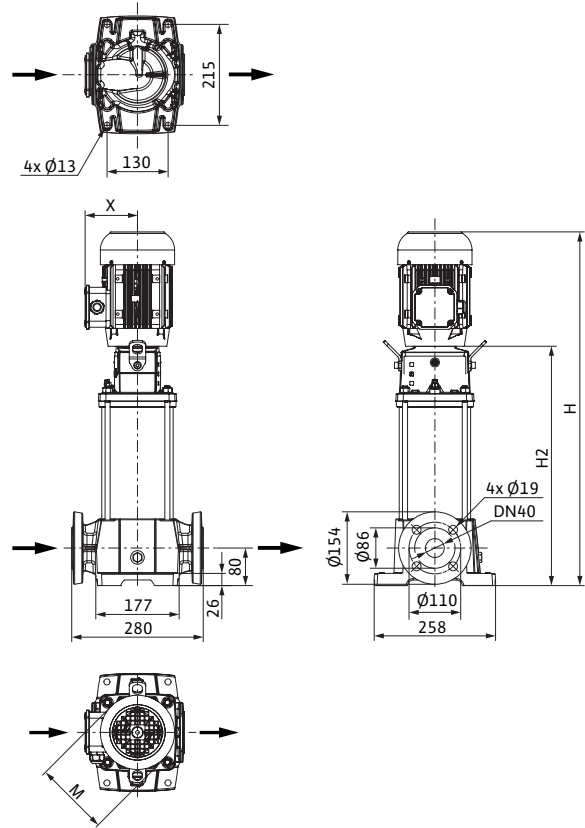
型号 Type	额定功率	额定电流	电机效率		
	Rated power	Nominal current 3~380 V, 50 Hz	Motor efficiency		
	P_2 kW	I_N A	$\eta_{m 50\%}$	$\eta_{m 75\%}$ %	$\eta_{m 100\%}$
Helix FIRST V 1001	0.55	1.13	72.8	76.7	77.8
Helix FIRST V 1002	0.75	1.83	76.7	80.3	80.7
Helix FIRST V 1003	1.10	2.54	79.1	82.1	82.7
Helix FIRST V 1004	1.50	3.36	80.5	83.7	84.2
Helix FIRST V 1005	2.20	4.69	83.1	85.6	85.9
Helix FIRST V 1006	2.20	4.69	83.1	85.6	85.9
Helix FIRST V 1007	3.00	6.47	85.6	87.0	87.1
Helix FIRST V 1008	3.00	6.47	85.6	87.0	87.1
Helix FIRST V 1009	4.00	8.42	86.5	88.0	88.1
Helix FIRST V 1010	4.00	8.42	86.5	88.0	88.1
Helix FIRST V 1011	4.00	8.42	86.5	88.0	88.1
Helix FIRST V 1012	5.50	10.7	87.3	89.1	89.2
Helix FIRST V 1013	5.50	10.7	87.3	89.1	89.2
Helix FIRST V 1015	5.50	10.7	87.3	89.1	89.2
Helix FIRST V 1017	7.50	15.24	89.8	90.5	90.1
Helix FIRST V 1019	7.50	15.24	89.8	90.5	90.1
Helix FIRST V 1021	7.50	15.24	89.8	90.5	90.1
Helix FIRST V 1023	11.00	20.94	88.9	90.5	91.2

Motor efficiency based on 380 V, 50 Hz

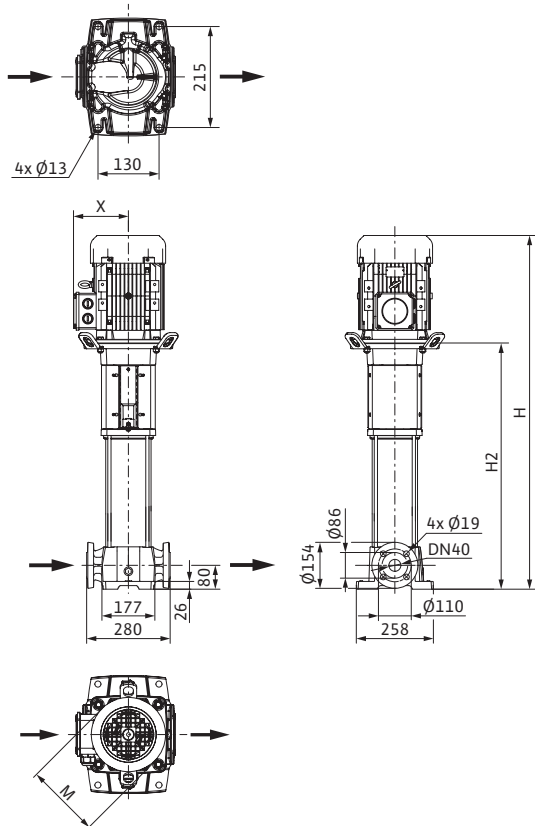
尺寸图 Dimension drawing Helix FIRST V 10, PN 16



尺寸图 Dimension drawing Helix FIRST V 10, PN 25



尺寸图 Dimension drawing Helix FIRST V 10, 30 bar

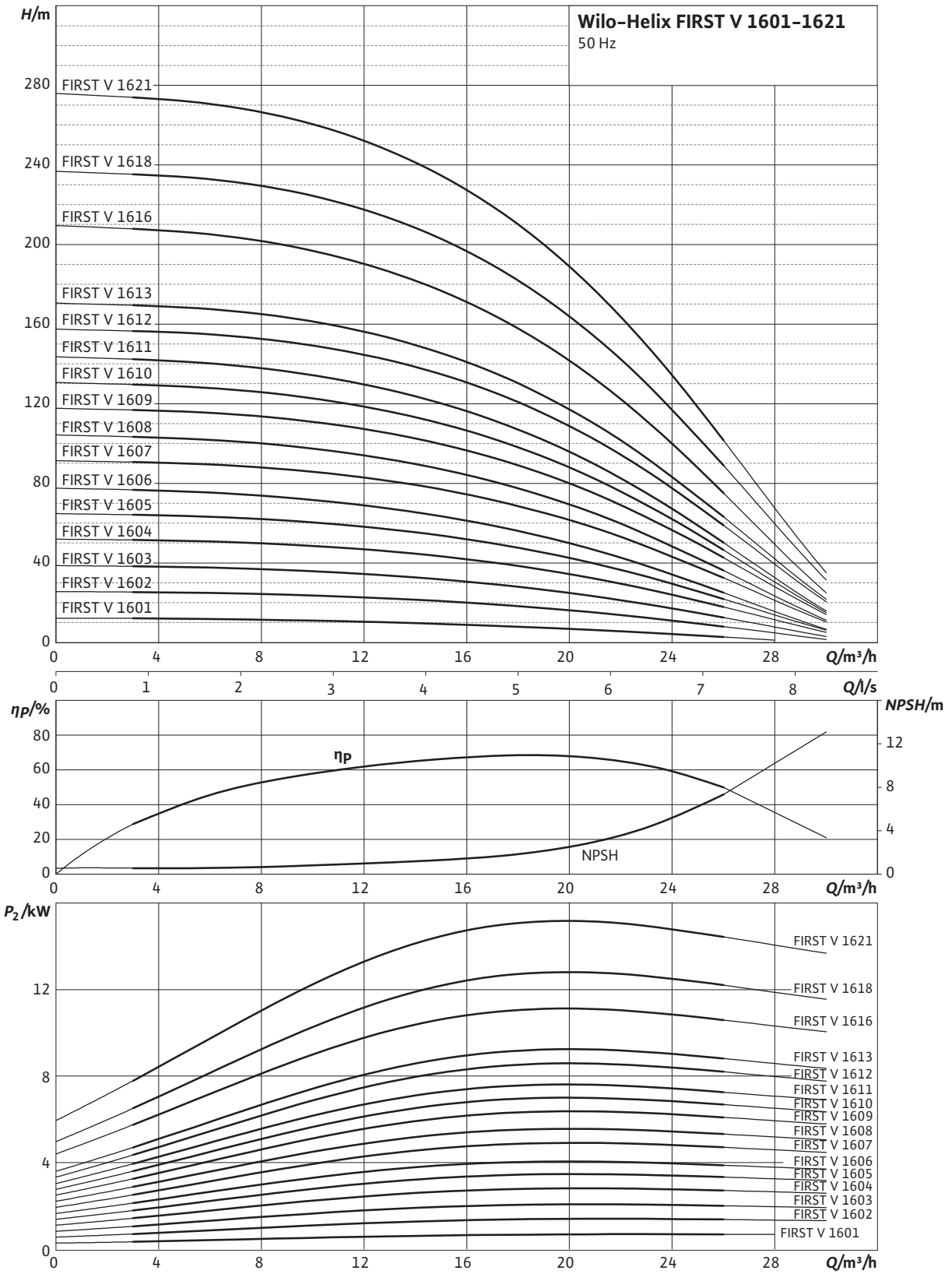


尺寸、重量 Dimensions, weights

型号 Type	承压等级 Maximum operating pressure	法兰尺寸 Nominal diameter, flange	公称直径 Nominal flange diam- eter	尺寸 Dimensions				重量 Weight ap- prox.
				p_{max} bar	DN	H	H2	
Helix FIRST V 1001	16	G 1½	-	573	362	138	119	22.1
Helix FIRST V 1001	25	-	40	547	336	138	119	32.1
Helix FIRST V 1002	16	G 1½	-	576	362	158	115	28.1
Helix FIRST V 1002	25	-	40	580	366	158	115	38.1
Helix FIRST V 1003	16	G 1½	-	641	400	158	115	29.8
Helix FIRST V 1003	25	-	40	645	404	158	115	39.8
Helix FIRST V 1004	16	G 1½	-	702	447	193	132	42.6
Helix FIRST V 1004	25	-	40	706	451	193	132	46.3
Helix FIRST V 1005	16	G 1½	-	749	485	193	132	44.6
Helix FIRST V 1005	25	-	40	753	489	193	132	48.2
Helix FIRST V 1006	16	G 1½	-	786	522	193	132	45.5
Helix FIRST V 1006	25	-	40	790	526	193	132	49.1
Helix FIRST V 1007	16	G 1½	-	862	570	217	141	47.1
Helix FIRST V 1007	25	-	40	866	574	217	141	57.0
Helix FIRST V 1008	16	G 1½	-	899	607	217	141	48.0
Helix FIRST V 1008	25	-	40	903	611	217	141	58.0
Helix FIRST V 1009	16	G 1½	-	960	645	196	145	49.7
Helix FIRST V 1009	25	-	40	964	649	196	145	59.0
Helix FIRST V 1010	16	G 1½	-	997	682	196	145	50.0
Helix FIRST V 1010	25	-	40	1001	686	196	145	60.0
Helix FIRST V 1011	16	G 1½	-	1072	757	196	145	52.0
Helix FIRST V 1011	25	-	40	1076	761	196	145	62.0
Helix FIRST V 1012	16	G 1½	-	1124	757	232	149	57.0
Helix FIRST V 1012	25	-	40	1128	761	232	149	68.0
Helix FIRST V 1013	25	-	40	1252	885	232	149	73.0
Helix FIRST V 1015	25	-	40	1327	960	232	149	74.0
Helix FIRST V 1017	25	-	40	1535	1155	225	160	94.0
Helix FIRST V 1019	25	-	40	1610	1230	225	160	96.0
Helix FIRST V 1021	30	-	40	1687	1307	225	160	97.0
Helix FIRST V 1023	30	-	40	1797	1382	279	182	115.0

性能曲线 Pump curves Minimum Efficiency Index (MEI): ≥ 0.5

Wilo-Helix FIRST V 1601 - 1621

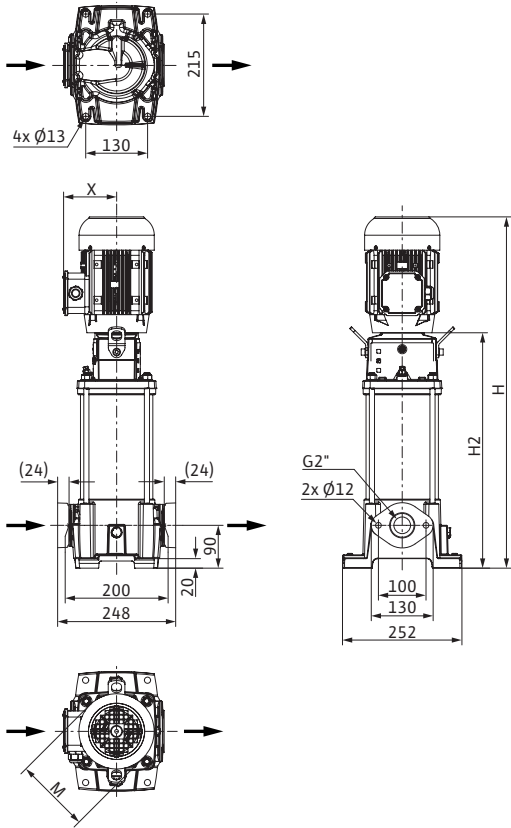


电机参数 Motor data

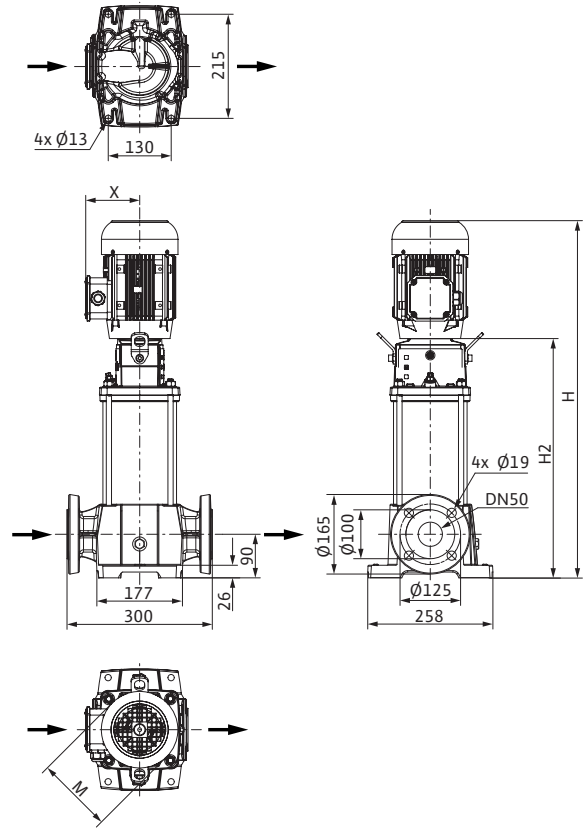
型号 Type	额定功率 Rated power	额定电流 Nominal current 3~380 V, 50 Hz	电机效率 Motor efficiency		
	P_2 kW	I_N A	$\eta_{m 50\%}$	$\eta_{m 75\%}$ %	$\eta_{m 100\%}$
Helix FIRST V 1601	0.75	1.83	76.7	80.3	80.7
Helix FIRST V 1602	1.50	3.36	80.5	83.7	84.2
Helix FIRST V 1603	2.20	4.69	83.1	85.6	85.9
Helix FIRST V 1604	3.00	6.47	85.6	87.0	87.1
Helix FIRST V 1605	4.00	8.42	86.5	88.0	88.1
Helix FIRST V 1606	4.00	8.42	86.5	88.0	88.1
Helix FIRST V 1607	5.50	10.7	87.3	89.1	89.2
Helix FIRST V 1608	5.50	10.7	87.3	89.1	89.2
Helix FIRST V 1609	7.50	15.24	89.8	90.5	90.1
Helix FIRST V 1610	7.50	15.24	89.8	90.5	90.1
Helix FIRST V 1611	7.50	15.24	89.8	90.5	90.1
Helix FIRST V 1612	11.00	20.94	88.9	90.5	91.2
Helix FIRST V 1613	11.00	20.94	88.9	90.5	91.2
Helix FIRST V 1616	11.00	20.94	90.1	91.2	91.2
Helix FIRST V 1618	15.00	27.9	87.7	89.9	91.9
Helix FIRST V 1621	15.00	27.9	87.7	89.9	91.9

Motor efficiency based on 380 V, 50 Hz

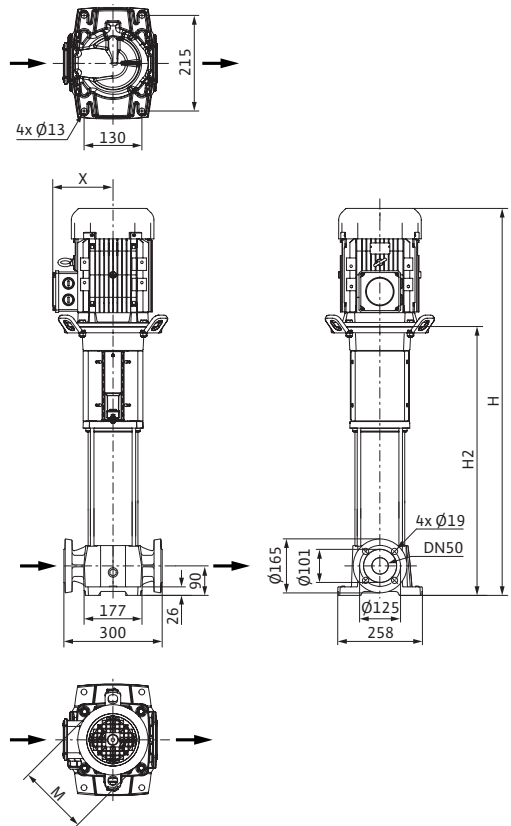
尺寸图 Dimension drawing Helix FIRST V 16, PN 16



尺寸图 Dimension drawing Helix FIRST V 16, PN 25



尺寸图 Dimension drawing Helix FIRST V 16, 30 bar

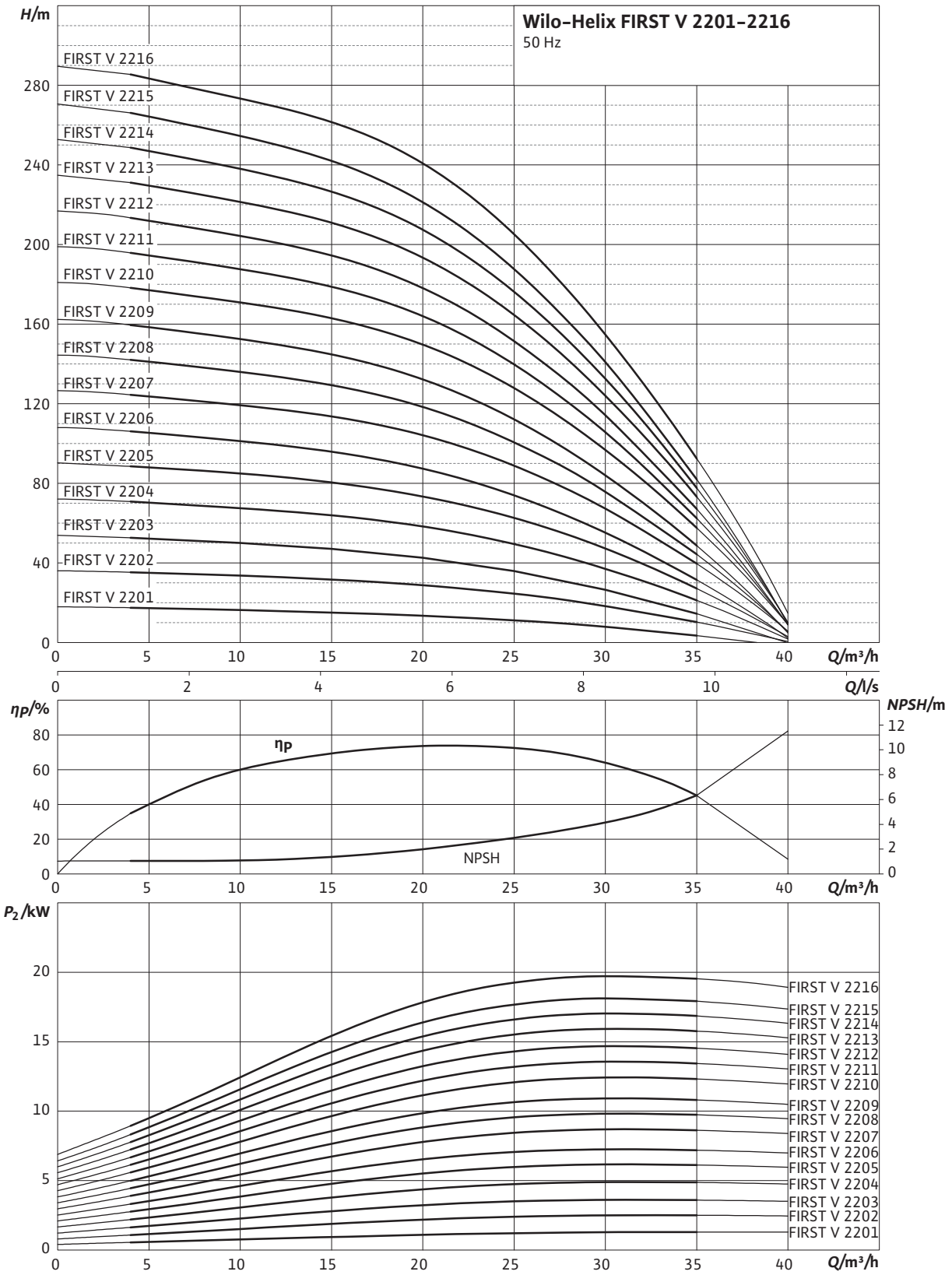


尺寸、重量 Dimensions, weights

型号 Type	承压等级 Maximum operating pressure	法兰尺寸 Nominal diameter, flange	公称直径 Nominal flange diam- eter	尺寸 Dimensions				重量 Weight ap- prox.
				p_{max} bar	DN	H	H2	
Helix FIRST V 1601	16	G 2	-	619	405	158	115	28.5
Helix FIRST V 1601	25	-	50	626	412	158	115	39.5
Helix FIRST V 1602	16	G 2	-	660	405	193	132	35.0
Helix FIRST V 1602	25	-	50	667	412	193	132	46.1
Helix FIRST V 1603	16	G 2	-	719	455	193	132	37.1
Helix FIRST V 1603	25	-	50	726	462	193	132	48.2
Helix FIRST V 1604	16	G 2	-	807	515	217	141	45.4
Helix FIRST V 1604	25	-	50	814	522	217	141	56.0
Helix FIRST V 1605	16	G 2	-	880	565	196	145	47.2
Helix FIRST V 1605	25	-	50	887	572	196	145	58.0
Helix FIRST V 1606	16	G 2	-	930	615	196	145	48.3
Helix FIRST V 1606	25	-	50	937	622	196	145	59.0
Helix FIRST V 1607	16	G 2	-	1032	665	232	149	54.0
Helix FIRST V 1607	25	-	50	1039	672	232	149	65.0
Helix FIRST V 1608	16	G 2	-	1082	715	232	149	56.0
Helix FIRST V 1608	25	-	50	1089	722	232	149	67.0
Helix FIRST V 1609	25	-	50	1320	940	225	160	90.0
Helix FIRST V 1610	25	-	50	1470	1090	225	160	92.0
Helix FIRST V 1611	25	-	50	1470	1090	225	160	93.0
Helix FIRST V 1612	25	-	50	1505	1090	279	182	108.0
Helix FIRST V 1613	25	-	50	1655	1240	279	182	111.0
Helix FIRST V 1616	30	-	50	1807	1392	279	182	117.0
Helix FIRST V 1618	30	-	50	1931	1421	302	200	170.0
Helix FIRST V 1621	30	-	50	2081	1571	302	200	175.0

性能曲线 Pump curves Minimum Efficiency Index (MEI): ≥ 0.7

Wilo-Helix FIRST V 2201 - 2216

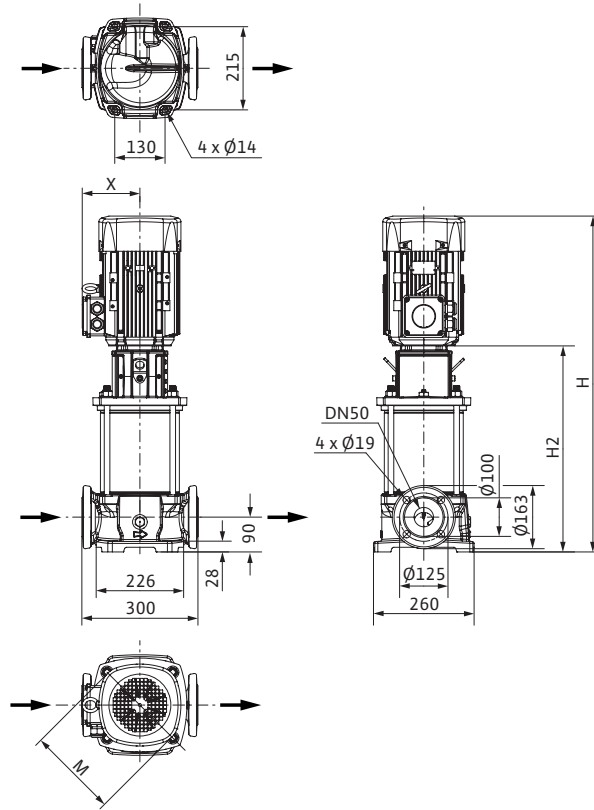


电机参数 Motor data

型号 Type	额定功率 Rated power	额定电流 Nominal current 3~380 V, 50 Hz	电机效率 Motor efficiency		
	P_2 kW	I_N A	$\eta_{m 50\%}$	$\eta_{m 75\%}$ %	$\eta_{m 100\%}$
Helix FIRST V 2201	1.50	3.36	80.5	83.7	84.2
Helix FIRST V 2202	3.00	6.47	85.6	87.0	87.1
Helix FIRST V 2203	4.00	8.42	86.5	88.0	88.1
Helix FIRST V 2204	5.50	10.7	87.3	89.1	89.2
Helix FIRST V 2205	7.50	15.24	89.8	90.5	90.1
Helix FIRST V 2206	7.50	15.24	89.8	90.5	90.1
Helix FIRST V 2207	11.00	20.94	88.9	90.5	91.2
Helix FIRST V 2208	11.00	20.94	90.1	91.2	91.2
Helix FIRST V 2209	11.00	20.94	90.1	91.2	91.2
Helix FIRST V 2210	15.00	27.9	87.7	89.9	91.9
Helix FIRST V 2211	15.00	27.9	87.7	89.9	91.9
Helix FIRST V 2212	15.00	27.9	87.7	89.9	91.9
Helix FIRST V 2213	18.50	34.2	90.4	92.3	92.4
Helix FIRST V 2214	18.50	34.2	90.4	92.3	92.4
Helix FIRST V 2215	18.50	34.2	90.4	92.3	92.4
Helix FIRST V 2216	22.00	40.5	90.8	92.3	92.7

Motor efficiency based on 380 V, 50 Hz

尺寸图 Dimension drawing Helix FIRST V 22

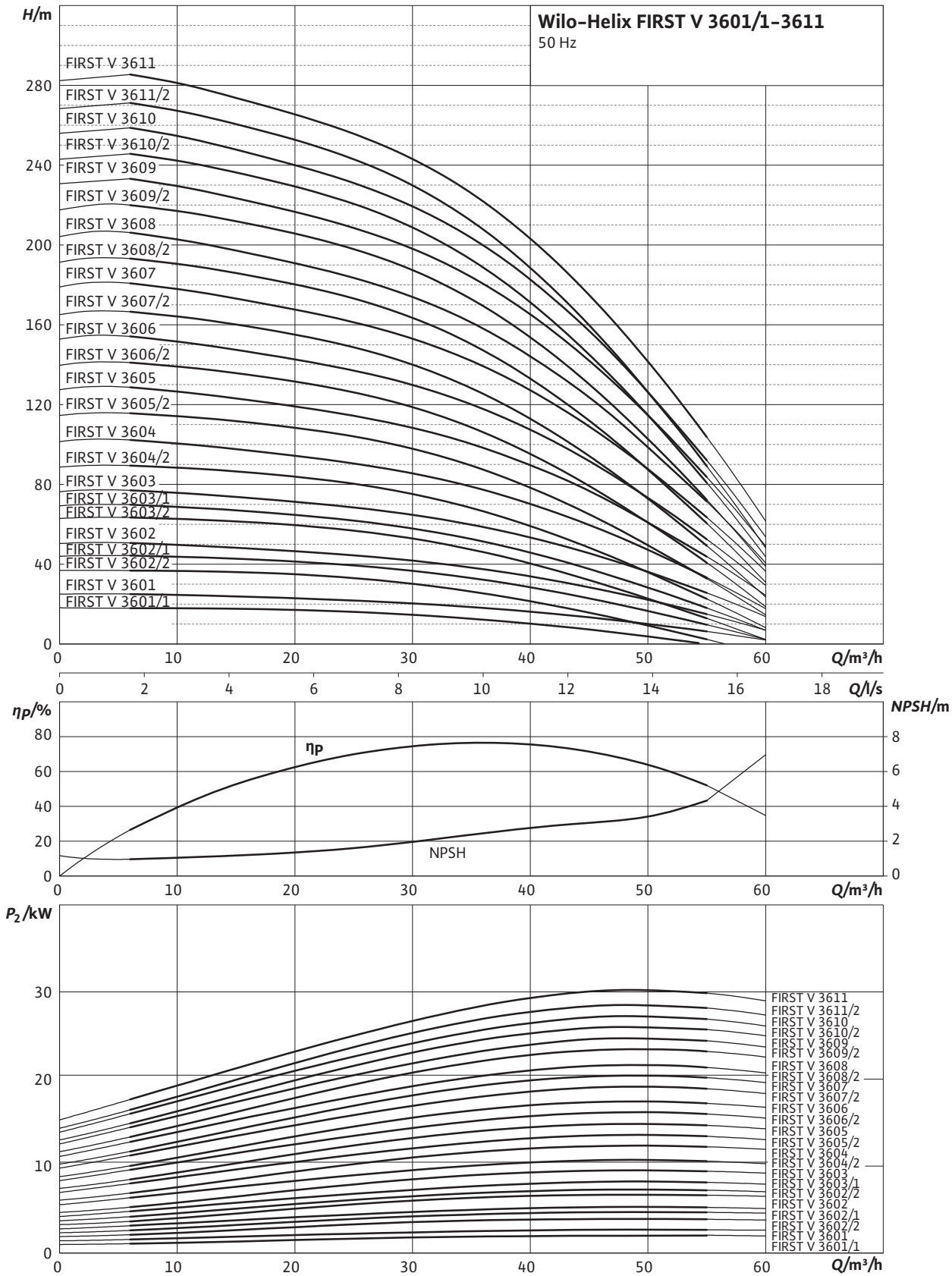


尺寸、重量 Dimensions, weights

型号 Type	承压等级 Maximum operating pressure	法兰尺寸 Nominal flange diameter	公称直径 Dimensions				重量 Weight approx.
	p_{max} bar	DN	H	H2	$\varnothing M$ mm	X	m kg
Helix FIRST V 2201	16	50	731	476	193	132	50.0
Helix FIRST V 2202	16	50	725	433	217	141	67.0
Helix FIRST V 2203	16	50	798	483	196	145	71.0
Helix FIRST V 2204	16	50	900	533	232	149	82.0
Helix FIRST V 2205	16	50	983	603	225	160	91.0
Helix FIRST V 2206	16	50	1033	653	225	160	92.0
Helix FIRST V 2207	16	50	1118	703	279	182	109.0
Helix FIRST V 2208	16	50	1168	753	279	182	144.0
Helix FIRST V 2209	25	50	1367	952	279	182	112.0
Helix FIRST V 2210	25	50	1542	1032	302	200	172.0
Helix FIRST V 2211	25	50	1592	1082	302	200	174.0
Helix FIRST V 2212	25	50	1642	1132	302	200	176.0
Helix FIRST V 2213	25	50	1737	1182	302	200	189.0
Helix FIRST V 2214	30	50	1787	1232	302	200	190.0
Helix FIRST V 2215	30	50	1837	1282	302	200	192.0
Helix FIRST V 2216	30	50	1932	1332	302	200	193.0

性能曲线 Pump curves Minimum Efficiency Index (MEI): ≥ 0.7

Wilo-Helix FIRST V 3601/1-3611

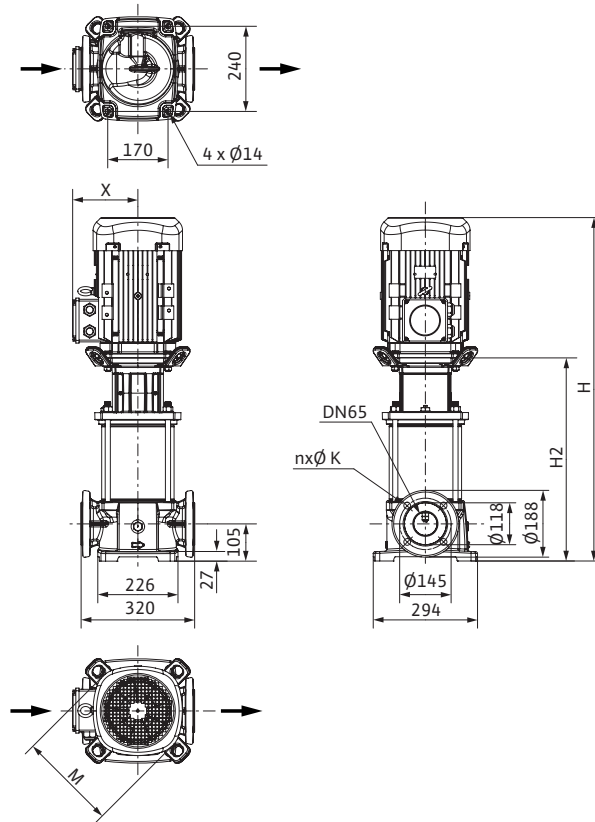


电机参数 Motor data

型号 Type	额定功率 Rated power	额定电流 Nominal current 3~380 V, 50 Hz	电机效率 Motor efficiency		
	P_2 kW	I_N A	$\eta_{m\ 50\%}$	$\eta_{m\ 75\%}$ %	$\eta_{m\ 100\%}$
Helix FIRST V 3601/1	2.20	4.69	83.1	85.6	85.9
Helix FIRST V 3601	3.00	6.47	85.6	87.0	87.1
Helix FIRST V 3602/2	4.00	8.42	86.5	88.0	88.1
Helix FIRST V 3602/1	5.50	10.7	87.3	89.1	89.2
Helix FIRST V 3602	5.50	10.7	87.3	89.1	89.2
Helix FIRST V 3603/2	7.50	15.24	89.8	90.5	90.1
Helix FIRST V 3603/1	7.50	15.24	89.8	90.5	90.1
Helix FIRST V 3603	11.00	20.94	88.9	90.5	91.2
Helix FIRST V 3604/2	11.00	20.94	90.1	91.2	91.2
Helix FIRST V 3604	11.00	20.94	90.1	91.2	91.2
Helix FIRST V 3605/2	15.00	27.9	87.7	89.9	91.9
Helix FIRST V 3605	15.00	27.9	87.7	89.9	91.9
Helix FIRST V 3606/2	15.00	27.9	87.7	89.9	91.9
Helix FIRST V 3606	18.50	34.2	90.4	92.3	92.4
Helix FIRST V 3607/2	18.50	34.2	90.4	92.3	92.4
Helix FIRST V 3607	22.00	40.5	90.8	92.3	92.7
Helix FIRST V 3608/2	22.00	40.5	90.8	92.3	92.7
Helix FIRST V 3608	22.00	40.5	90.8	92.3	92.7
Helix FIRST V 3609/2	30.00	54.9	93.3	93.7	93.3
Helix FIRST V 3609	30.00	54.9	93.3	93.7	93.3
Helix FIRST V 3610/2	30.00	54.9	93.3	93.7	93.3
Helix FIRST V 3610	30.00	54.9	93.3	93.7	93.3
Helix FIRST V 3611/2	30.00	54.9	93.3	93.7	93.3
Helix FIRST V 3611	37.00	67.4	93.3	93.7	93.7

Motor efficiency based on 380 V, 50 Hz

尺寸图 Dimension drawing Helix FIRST V 36



尺寸、重量 Dimensions, weights

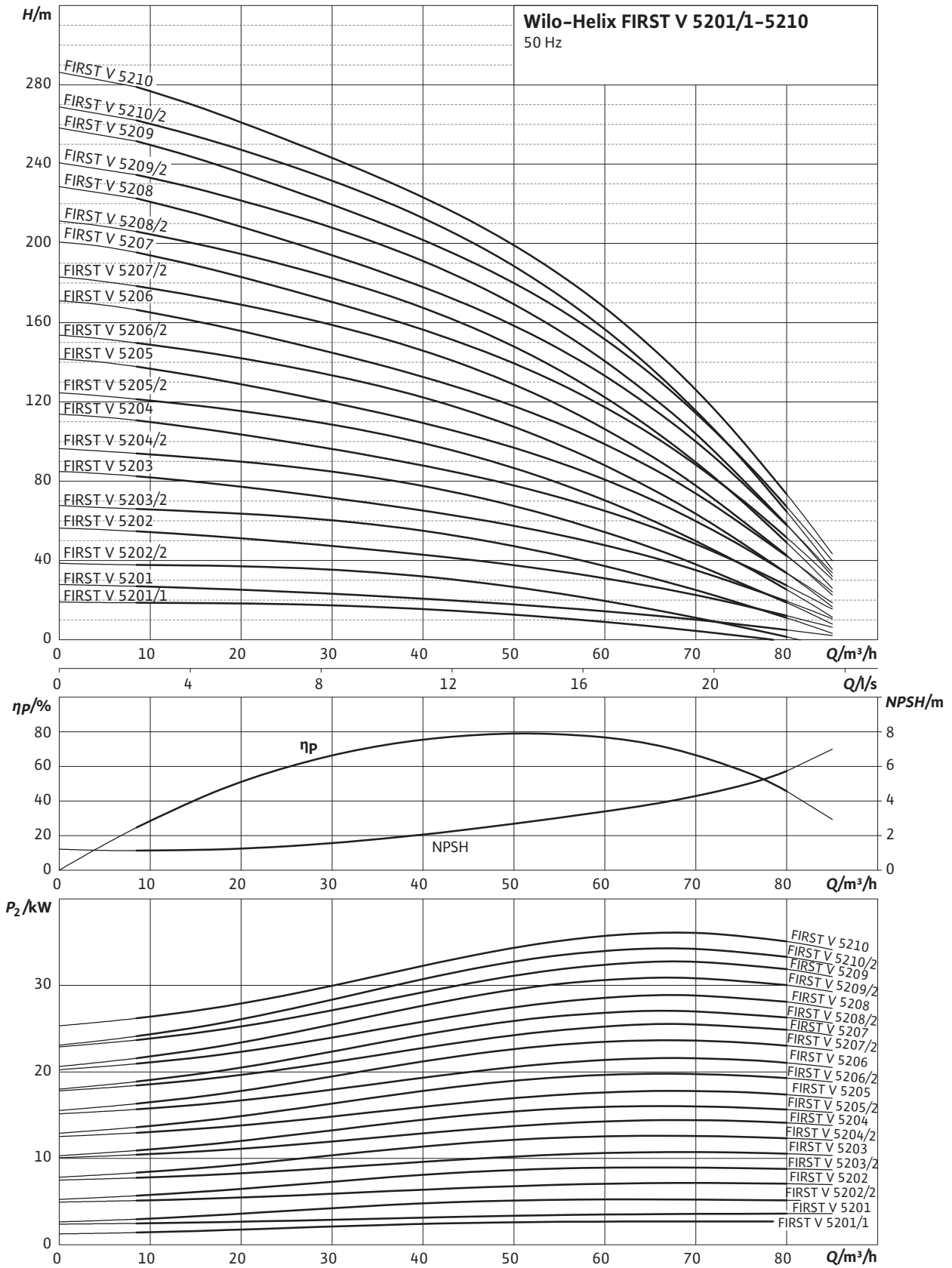
型号 Type	承压等级 Maximum operating pressure	公称直径 Nominal flange diam- eter	尺寸 Dimensions					重量 Weight ap- prox.
	p_{max} bar	DN	H	H2	$\varnothing M$ mm	X	$n \times \varnothing K$	m
Helix FIRST V 3601/1	16	65	726	462	193	132	4xØ 19	57.0
Helix FIRST V 3601	16	65	711	419	217	141	4xØ 19	71.0
Helix FIRST V 3602/2	16	65	801	486	196	145	4xØ 19	76.0
Helix FIRST V 3602/1	16	65	853	486	232	149	4xØ 19	85.0
Helix FIRST V 3602	16	65	853	486	232	149	4xØ 19	85.0
Helix FIRST V 3603/2	16	65	953	573	225	160	4xØ 19	94.0
Helix FIRST V 3603/1	16	65	953	573	225	160	4xØ 19	95.0
Helix FIRST V 3603	16	65	988	573	279	182	4xØ 19	109.0
Helix FIRST V 3604/2	16	65	1054	639	279	182	4xØ 19	146.0
Helix FIRST V 3604	16	65	1054	639	279	182	4xØ 19	146.0
Helix FIRST V 3605/2	25	65	1395	885	302	200	8xØ 19	177.0
Helix FIRST V 3605	25	65	1395	885	302	200	8xØ 19	177.0
Helix FIRST V 3606/2	25	65	1462	952	302	200	8xØ 19	179.0
Helix FIRST V 3606	25	65	1507	952	302	200	8xØ 19	190.0
Helix FIRST V 3607/2	25	65	1573	1018	302	200	8xØ 19	191.0
Helix FIRST V 3607	25	65	1618	1018	302	200	8xØ 19	191.0
Helix FIRST V 3608/2	25	65	1685	1085	302	200	8xØ 19	192.0
Helix FIRST V 3608	25	65	1685	1085	302	200	8xØ 19	193.0

尺寸、重量 Dimensions, weights

型号 Type	承压等级 Maximum operating pressure	公称直径 Nominal flange diam- eter	尺寸 Dimensions					重量 Weight ap- prox.
			p_{max} bar	DN	H	H2	$\varnothing M$ mm	
Helix FIRST V 3609	25	65	1812	1152	415	261	8x \varnothing 19	268.0
Helix FIRST V 3609/2	25	65	1812	1152	415	261	8x \varnothing 19	268.0
Helix FIRST V 3610	30	65	1878	1218	415	261	8x \varnothing 19	283.0
Helix FIRST V 3610/2	25	65	1878	1218	415	261	8x \varnothing 19	270.0
Helix FIRST V 3611	30	65	1945	1285	415	261	8x \varnothing 19	289.0
Helix FIRST V 3611/2	30	65	1945	1285	415	261	8x \varnothing 19	286.0

性能曲线 Pump curves Minimum Efficiency Index (MEI): ≥ 0.7

Wilo-Helix FIRST V 5201/1-5210

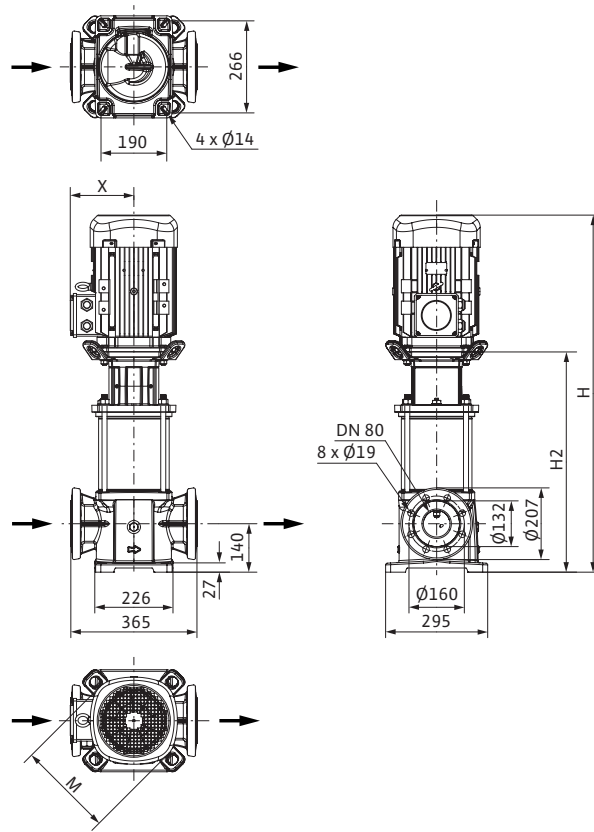


电机参数 Motor data

型号 Type	额定功率 Rated power	额定电流 Nominal current 3~380 V, 50 Hz	电机效率 Motor efficiency		
	P_2 kW	I_N A	$\eta_{m 50\%}$	$\eta_{m 75\%}$ %	$\eta_{m 100\%}$
Helix FIRST V 5201/1	3.00	6.47	85.6	87.0	87.1
Helix FIRST V 5201	4.00	8.42	86.5	88.0	88.1
Helix FIRST V 5202/2	5.50	10.7	87.3	89.1	89.2
Helix FIRST V 5202	7.50	15.24	89.8	90.5	90.1
Helix FIRST V 5203/2	11.00	20.94	90.1	91.2	91.2
Helix FIRST V 5203	11.00	20.94	90.1	91.2	91.2
Helix FIRST V 5204/2	15.00	27.9	87.7	89.9	91.9
Helix FIRST V 5204	15.00	27.9	87.7	89.9	91.9
Helix FIRST V 5205/2	18.50	34.2	90.4	92.3	92.4
Helix FIRST V 5205	18.50	34.2	90.4	92.3	92.4
Helix FIRST V 5206/2	22.00	40.5	90.8	92.3	92.7
Helix FIRST V 5206	22.00	40.5	90.8	92.3	92.7
Helix FIRST V 5207/2	30.00	54.9	93.3	93.7	93.3
Helix FIRST V 5207	30.00	54.9	93.3	93.7	93.3
Helix FIRST V 5208/2	30.00	54.9	93.3	93.7	93.3
Helix FIRST V 5208	30.00	54.9	93.3	93.7	93.3
Helix FIRST V 5209/2	37.00	67.4	93.3	93.7	93.7
Helix FIRST V 5209	37.00	67.4	93.3	93.7	93.7
Helix FIRST V 5210/2	37.00	67.4	93.3	93.7	93.7
Helix FIRST V 5210	37.00	67.4	93.3	93.7	93.7

Motor efficiency based on 380 V, 50 Hz

尺寸图 Dimension drawing Helix FIRST V 52



尺寸、重量 Dimensions, weights

型号 Type	承压等级 Maximum operating pressure	公称直径 Nominal flange diameter	尺寸 Dimensions				重量 Weight approx.
	p_{max} bar	DN	H	H2	$\varnothing M$ mm	X	m kg
Helix FIRST V 5201/1	16	80	775	483	217	141	81.0
Helix FIRST V 5201	16	80	798	483	196	145	83.0
Helix FIRST V 5202/2	16	80	950	583	232	149	96.0
Helix FIRST V 5202	16	80	983	603	225	160	103.0
Helix FIRST V 5203/2	16	80	1118	703	279	182	155.0
Helix FIRST V 5203	16	80	1118	703	279	182	155.0
Helix FIRST V 5204/2	25	80	1492	982	302	200	192.0
Helix FIRST V 5204	25	80	1492	982	302	200	192.0
Helix FIRST V 5205/2	25	80	1637	1082	302	200	207.0
Helix FIRST V 5205	25	80	1637	1082	302	200	207.0
Helix FIRST V 5206/2	25	80	1782	1182	302	200	211.0
Helix FIRST V 5206	25	80	1782	1182	302	200	211.0
Helix FIRST V 5207/2	25	80	1942	1282	415	261	289.0
Helix FIRST V 5207	25	80	1942	1282	415	261	289.0
Helix FIRST V 5208/2	25	80	2042	1382	415	261	292.0
Helix FIRST V 5208	25	80	2042	1382	415	261	292.0
Helix FIRST V 5209/2	25	80	2142	1482	415	261	298.0
Helix FIRST V 5209	30	80	2142	1482	415	261	298.0
Helix FIRST V 5210/2	30	80	2242	1582	415	261	302.0
Helix FIRST V 5210	30	80	2242	1582	415	261	302.0

